

# SILVERTON

SANCTUARY  
AT HUNTINGTON TRAILS



EURO COTTAGE



COLORADO LODGE



CRAFTSMAN

## This home is “Built Green” and Built Better!

### Better Windows

All windows are double pane, superior casement with Low-E coatings providing superb comfort and reducing the size of furnaces and air conditioners to optimize energy efficiency.

### Tighter Construction

We give priority attention to sealing traditional problem areas such as cantilevered floors, house and garage connections, attic passageways and bathtubs, fireplace and exterior walls. Prior to closing, every home is “tightness tested” to Sopris’ – and your – high standards.

### High-Efficiency Equipment

The furnaces we install exceed 90 percent efficiency and air conditioners are 13 SEER minimum. Heating and cooling equipment are right-sized according to detailed energy calculations to maximize efficiency, performance and comfort.

### Better-Insulated Shell

Every exterior wall is sprayed with high-tech insulation. Floors above garage ceilings are dense-packed with blown insulation to ensure full coverage, eliminating the chance for outdoor air to bypass insulation as well as reducing outside noise.

### Combustion Safety

To improve the quality of indoor air, all water heaters, furnaces and fireplaces are sealed-combustion, eliminating the risk of pulling dangerous combustion gases down flues and into your home.

### Multi-Zone Heating and Cooling

To achieve optimum comfort and temperature consistency, Sopris installs separately controlled heating and cooling equipment on every floor of conditioned living space.

### Guaranteeing Your Comfort

By setting tough standards for the way we build your home inside and out, you’ll benefit from environmental efficiencies and lower energy bills. In addition, we’ll guarantee that no room in your home will have a temperature variation of more than three degrees. Ask your sales representative about the Sopris Homes difference and for more information about our comfort and energy use guarantee.

# Silverton

2693 finished sq. ft., 138 sq. ft. courtyard, unfinished basement, 3 bedroom, 3 bath, study, home center, courtyard, 3 car garage.

Filled with architecturally intriguing details and inviting outdoor spaces that truly enhance one story living. Windows of light hint to spaces beyond while connecting the functional Home Center to the sound of greetings from the Foyer. Spacious living and easy entertaining are facilitated by the large rounded kitchen island while after dinner guests adjourn from the dining room to the cozy out-door courtyard. The courtyard is always a serene setting from the private study or great room. An inviting Owner's Entry and a quick stop in the Home Center to drop off the mail and the owner can retreat through a gracious turret to his suite, featuring his & hers closets, separate vanities, soaking tub & shower with seat.

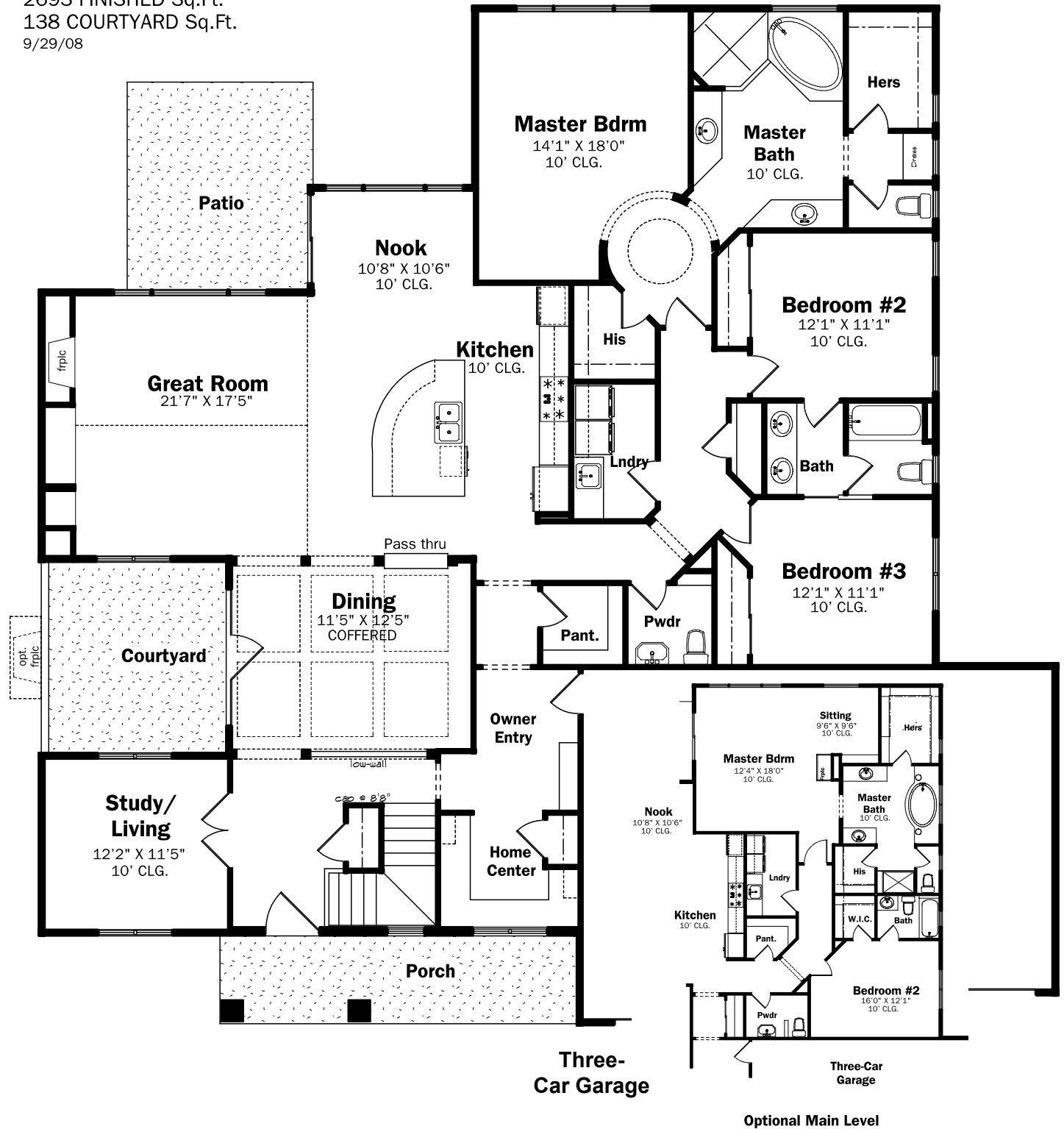
Optional Main level adds a Butler's pantry and Masters Retreat with sitting room and a dramatic master bath in lieu of bedroom 3.

*Sopris Home's policy is of continual research and improvement. Dimensions and specifications therefore are subject to change from time to time in the interest of the purchaser. Comparable equipment may be substituted based on availability. Please consult with a Sopris Homes representative or sales associate for details.*

For more information contact:  
**Jen Schell at 303.280.8670,**  
**cell 720.224.2044 or**  
**jen@soprisdevelopment.com**



2693 FINISHED Sq.Ft.  
 138 COURTYARD Sq.Ft.  
 9/29/08



Three-Car Garage

Three-Car Garage

Optional Main Level