

DURANGO

SANCTUARY
AT HUNTINGTON TRAILS



EURO COTTAGE



COLORADO LODGE



CRAFTSMAN

This home is “Built Green” and Built Better!

Better Windows

All windows are double pane, superior casement with Low-E coatings providing superb comfort and reducing the size of furnaces and air conditioners to optimize energy efficiency.

Tighter Construction

We give priority attention to sealing traditional problem areas such as cantilevered floors, house and garage connections, attic passageways and bathtubs, fireplace and exterior walls. Prior to closing, every home is “tightness tested” to Sopris’ – and your – high standards.

High-Efficiency Equipment

The furnaces we install exceed 90 percent efficiency and air conditioners are 13 SEER minimum. Heating and cooling equipment are right-sized according to detailed energy calculations to maximize efficiency, performance and comfort.

Better-Insulated Shell

Every exterior wall is sprayed with high-tech insulation. Floors above garage ceilings are dense-packed with blown insulation to ensure full coverage, eliminating the chance for outdoor air to bypass insulation as well as reducing outside noise.

Combustion Safety

To improve the quality of indoor air, all water heaters, furnaces and fireplaces are sealed-combustion, eliminating the risk of pulling dangerous combustion gases down flues and into your home.

Multi-Zone Heating and Cooling

To achieve optimum comfort and temperature consistency, Sopris installs separately controlled heating and cooling equipment on every floor of conditioned living space.

Guaranteeing Your Comfort

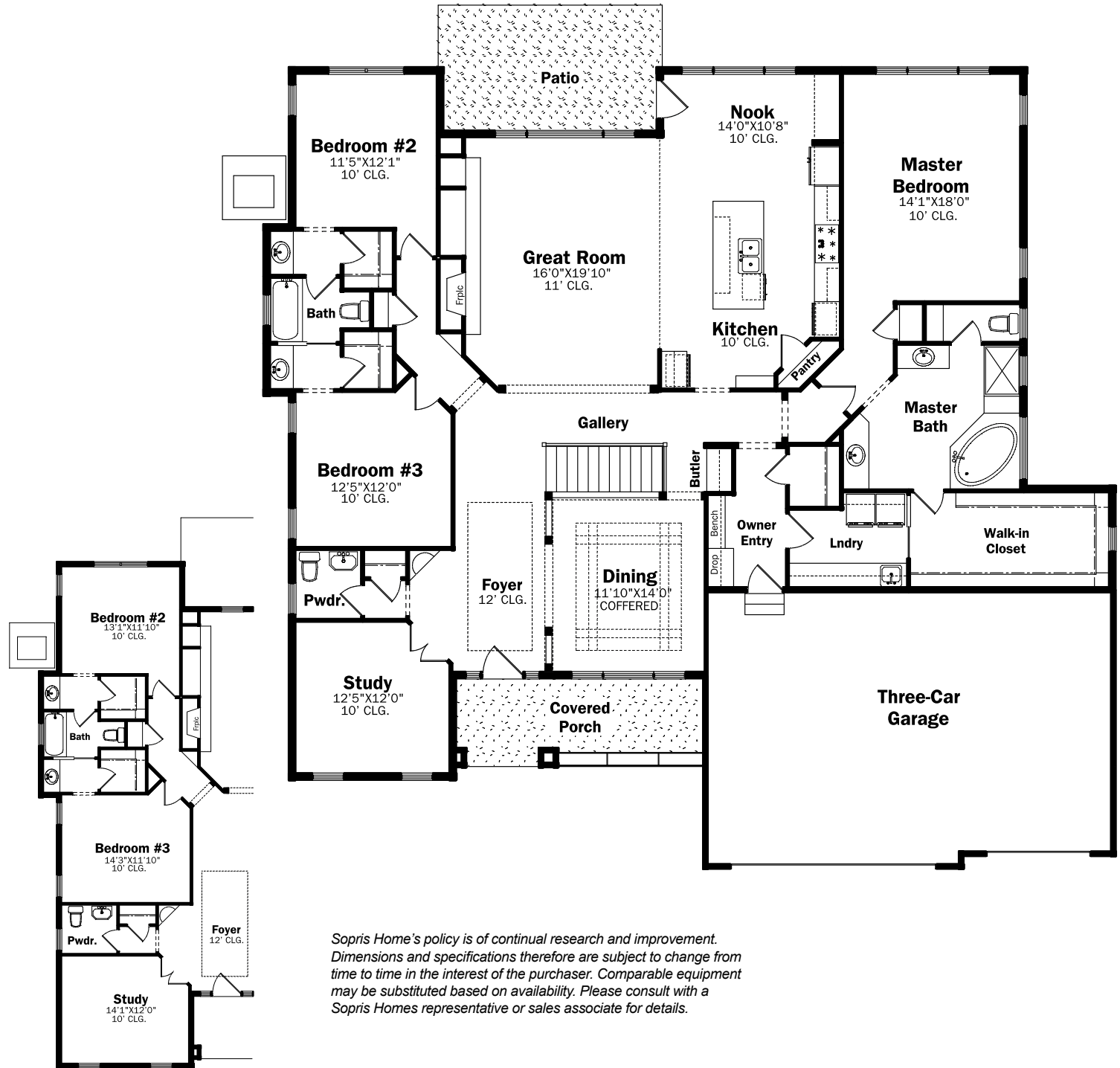
By setting tough standards for the way we build your home inside and out, you’ll benefit from environmental efficiencies and lower energy bills. In addition, we’ll guarantee that no room in your home will have a temperature variation of more than three degrees. Ask your sales representative about the Sopris Homes difference and for more information about our comfort and energy use guarantee.

Durango

2747 finished square feet,
 unfinished basement,
 3 bedroom, 3 bath, study,
 3 car garage.

The Foyer and gallery create a beautiful formality to this ranch style home with graceful arches framing spacious great room. This home has it all, including a main floor study, butler's pantry and elegant dimensional custom cabinets to frame the kitchen and a large sit down island. Guest bedrooms each have their own vanity and walk-in closet and are separated from the Master Suite, which features huge walk-in closet, separate vanities, soaking tub and shower with seat. An inviting Owner's Entry features a welcoming bench and a place to set your things as well as walk-in coat closet, and a separate laundry room with plenty of counter space. At Sopris, we believe no homeowner should ever have to walk through the laundry room upon entering their home!

For more information contact:
Jen Schell at 303.280.8670, cell 720.224.2044 or jen@soprisdevelopment.com



Sopris Home's policy is of continual research and improvement. Dimensions and specifications therefore are subject to change from time to time in the interest of the purchaser. Comparable equipment may be substituted based on availability. Please consult with a Sopris Homes representative or sales associate for details.